

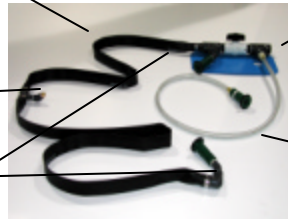
UniFold Installation Instructions

DSPK-Decon Shower Plumbing Kit

A - Hose and Valve Assembly (mount outside) to left side of valley fold in side wall

F - Fixed peak shower nozzle (mounts inside)

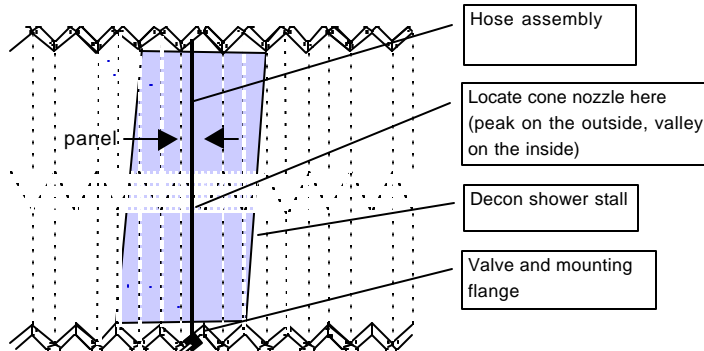
D & E - Throttle-able side shower heads (mount inside)



B - Valve Mounting Flange (mounts outside) use 4 plastic nut and bolt fasteners. Use flange as template for drill pattern

C - Throttle-able hand held sprayer (mounts inside)

Looking down from the top, the mounting flange and the valve should mount flush to the left face of a valley fold. The mounting points (spray heads) of the lay flat 1.5" hose should stay in the center of the panel as it is draped across the roof of the shelter. Ensure 3" of slack in the hose between spray heads as the hose must expand under pressure.



Hose assembly

Locate cone nozzle here (peak on the outside, valley on the inside)

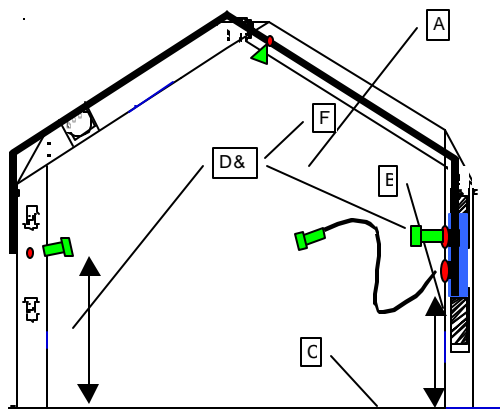
Decon shower stall

Valve and mounting flange

INSTALLATION PROCESS

● = 2" HOLE USE COMMON HOLE SAW

● = 1" HOLE USE COMMON WOOD BIT



1 - Identify panel in which to drill holes.

2 - Drape hose assembly (A) across shelter and along the panel through which it will fasten.

3 - Install mounting flange (B) such that its bottom edge is X" from the floor of the shelter. (Drill holes per mounting flange template)

4 - Fasten valve through flange by threading the shower head (D) and hand held sprayer (C) from the inside face into the female "T's" of the hose assembly through the holes drilled in the shelter panel. Tighten using channel lock pliers.

5 - Fasten shower head (E) by threading the shower head through the shelter panel into the female thread of the hose assembly elbow.

6 - Tighten and direct shower heads and the peak nozzle by rotating the 45 deg elbows. F should do head and shoulders, D should do chest and back, E should do hips and legs.

7 - Install decon shower stall and make small slits so the side shower heads can pass through.

Now that the plumbing and shower stall are integrated, the shelter can be knocked down and set-up as one piece. **CAUTION** - Do not forcibly crush or step on the flat shelter pancake as the shower heads are not designed to support weight in the collapsed shelter position.